

## Getting Started with OpenStack

### CONNECT TO YOUR INSTANCE BY USING SSH:

To use SSH to connect to your instance, use the downloaded keypair file.

**Note:** The user name is ubuntu for the Ubuntu cloud images no password.

1. Copy the IP address for your instance.
2. Use the **ssh** command to make a secure connection to the instance. For example:

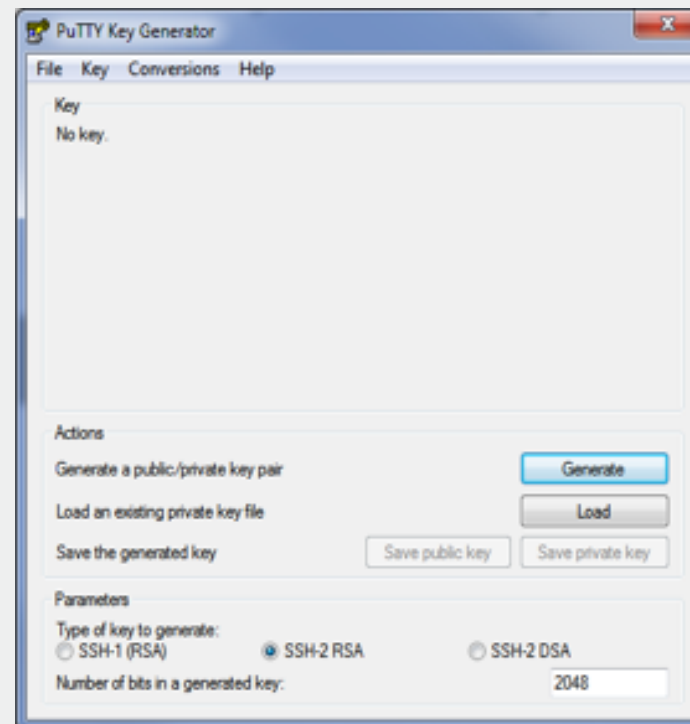
```
3. $ ssh -i MyKey.pem ubuntu@10.0.0.2
```

4. At the prompt, type yes.

### CONNECT TO YOUR INSTANCE BY USING PUTTY:

**Prerequisites:** Before you connect to your Linux instance using PuTTY, complete the following prerequisite steps:

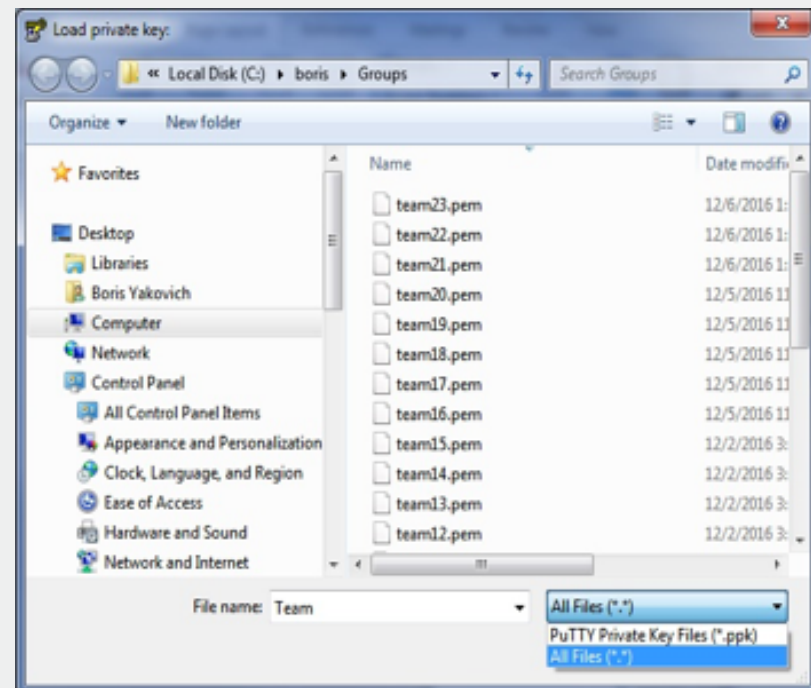
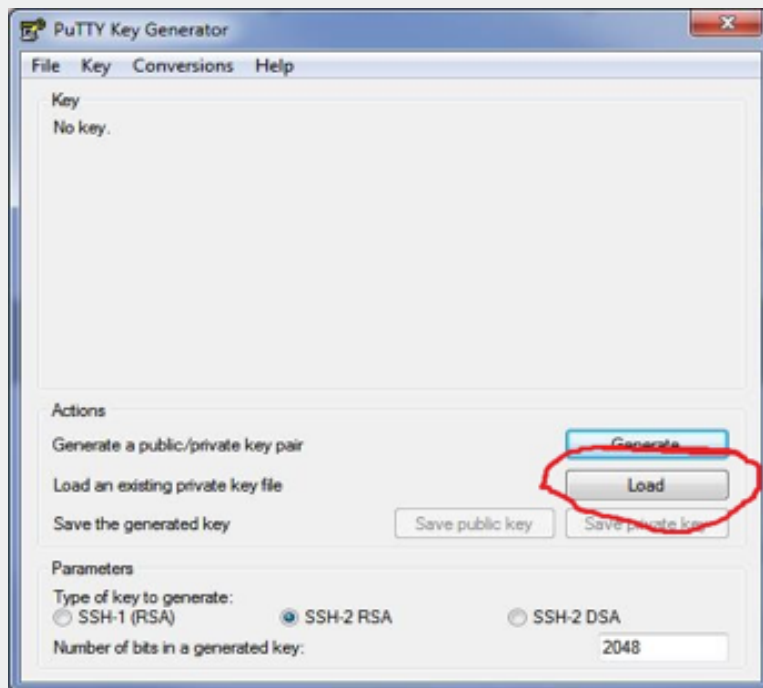
1. Download and install PuTTY from [PuTTY download page](#).
2. Download and install Putty Gen from [PuTTYGen download page](#).
3. Launch Putty Gen:



## Getting Started with OpenStack (cont'd)

### CONNECT TO YOUR INSTANCE BY USING PUTTY: (cont'd)

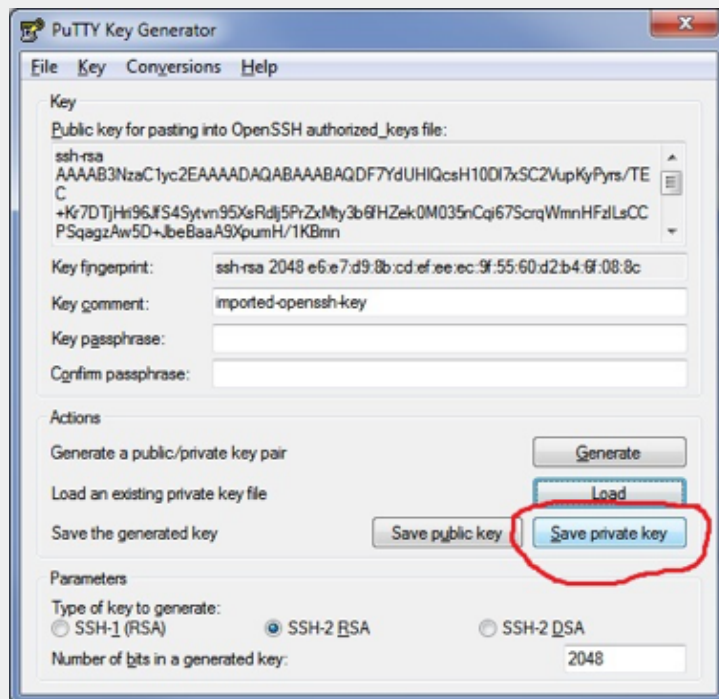
4. Click on the load button, select all files and locate the .pem file provided, click open.



## Getting Started with OpenStack (cont'd)

### CONNECT TO YOUR INSTANCE BY USING PUTTY: (cont'd)

5. Select "Save private key" and select yes to "save this key without a passphrase".

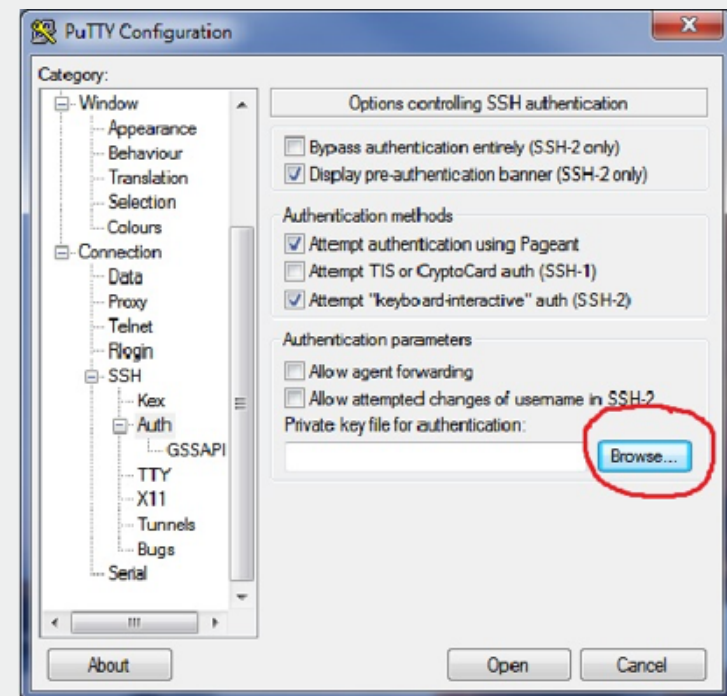
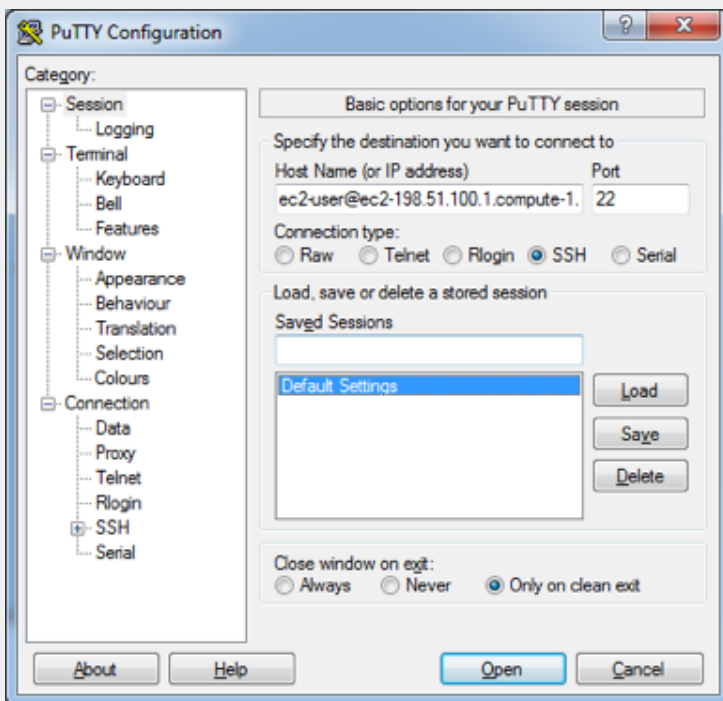


6. Save file to your choice of destination as a .ppk type, Ex: team1 TYPE: Putty Private Key Files .ppk

## Getting Started with OpenStack (cont'd)

### USING PUTTY:

1. Start PuTTY (from the Start menu, choose All Programs > PuTTY > PuTTY). In the Category pane, select **Session**: type in the hostname or IP of instance.
2. In the Category pane, open **Connection\SSHAuth**: Select Browse and then locate the .ppk (Private Key file) created above.



3. Select Open, and when prompted "The servers rsa2 key fingerprint is: If you trust this host" select yes. At prompt type in user info:

**Note:** The user name is ubuntu for the Ubuntu cloud images no password.

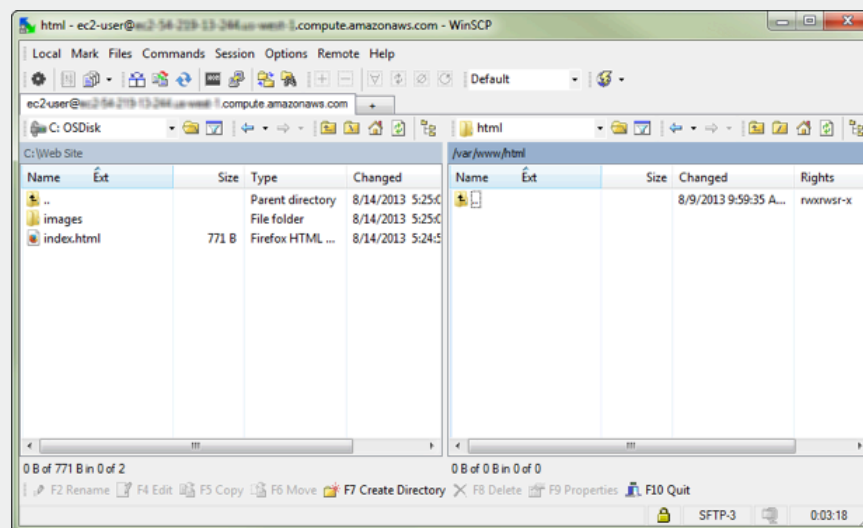
## Getting Started with OpenStack (cont'd)

### TRANSFERRING FILES TO YOUR LINUX INSTANCE USING WINSCP:

WinSCP is a GUI-based file manager for Windows that allows you to upload and transfer files to a remote computer using the SFTP, SCP, FTP, and FTPS protocols. WinSCP allows you to drag and drop files from your Windows machine to your Linux instance or synchronize entire directory structures between the two systems.

To use WinSCP, you need the private key you generated in [Converting Your Private Key Using PuTTYgen](#). You also need the public DNS address of your Linux instance.

1. Download and install WinSCP from <http://winscp.net/eng/download.php>. For most users, the default installation options are OK.
2. Start WinSCP.
3. At the **WinSCP login screen**, for **Host name**, enter the public DNS host-name or public IPv4 address for your instance.
4. For **User name**, enter the default user name for Ubuntu, the user name is ubuntu.
5. Specify the private key for your instance. For **Private key**, enter the path to your private key, or choose the “...” button to browse for the file. For newer versions of WinSCP, you need to choose **Advanced** to open the advanced site settings and then under SSH, choose **Authentication** to find the **Private key** file setting.  
**Note:** WinSCP requires a PuTTY private key file (.ppk). You can convert a .pem security key file to the .ppk format using PuTTYgen.
6. Choose **Login** to connect, and choose Yes to add the host fingerprint to the host cache.



After the connection is established, in the connection window your Linux instance is on the right and your local machine is on the left. You can drag and drop files directly into the remote file system from your local machine. For more information on WinSCP, see the project documentation at <http://winscp.net/eng/docs/start>.

#### Note

If you receive a “Cannot execute SCP to start transfer” error, you must first install **scp** on your Linux instance. For some operating systems, this is located in the `openssh-clients` package. For Amazon Linux variants, such as the Amazon ECS-optimized AMI, use the following command to install **scp**.  
Ex: [Team1]\$ sudo apt install openssh-client